



# SPRING PROGRAMS 2025

## Easton Park & Recreation



**FOD**  
**Field of Dreams**

## Welcome to Easton Park & Recreation Department Information

### EASTON PARK & RECREATION

652 Morehouse Road ■ Easton, CT 06612  
Phone: 203-268-7200

Hours of Operation:  
M-F - 9:00am-4:00pm

#### STAFF

Director.....Danielle Alves  
[Dalves@eastonct.gov](mailto:Dalves@eastonct.gov)  
Recreational Programmer.....Lisa Farasciano  
[Lfarasciano@eastonct.gov](mailto:Lfarasciano@eastonct.gov)  
Secretary.....  
[eastonpr@eastonct.gov](mailto:eastonpr@eastonct.gov)

### EXTENDED DAY

Samuel Staples Elementary School –  
RM# 139

Director..... Keysha Evans  
[Extendedday139@gmail.com](mailto:Extendedday139@gmail.com)

Voicemail Line: 203-650-3297 – For after  
hours calls & changes to your child's schedule.

Land Line: 203-261-8705 – For calls during  
program hours and pickup.  
(7:00-8:40am & 4:00-6:00pm).



### Spring 2025

The Easton Park & Rec Office Will  
Be Closed:  
April 18<sup>th</sup> .....Good Friday  
May 26<sup>th</sup> ..... Memorial Day  
June 19<sup>th</sup> ..... Juneteenth

### EASTON PARK & RECREATION COMMISSION

Rocky Sullivan – Chairman  
Chris Barcello  
Dave Gombos  
Nick Jhilal  
Carolyn Oppenheim  
Jud Wible

All Park & Recreation meetings are open to the  
public and are held on the 3<sup>rd</sup> Tuesday of every  
month at 6:30 pm in the office.

We reserve the right to  
make changes in price, content,  
description, etc. at any time without  
notice.

**OOOPS!** Despite our best efforts, errors  
sometimes make it to print. We apologize  
for any inconvenience these errors may  
cause.



Follow us @EastonParksRec on TWITTER for field closures



Like us on Facebook at Eastonparkandrecreation



Visit our website at [www.eastonrec.com](http://www.eastonrec.com)

## IMPORTANT INFORMATION

Register at [www.eastonrec.com](http://www.eastonrec.com)



**Don't Wait!** Nothing cancels programs more than waiting until the last minute to register, as they may get cancelled due to low enrollment. Vendors will cancel a program several days before the start date if enrollment is low.

Register at [www.eastonrec.com](http://www.eastonrec.com)

### Samuel Staples Half Days & Vacation Days for 2025

March 21<sup>st</sup> – Early Dismissal (1:40pm)

April PT Conference Days – 9, 10 & 11, Early Dismissal (1:00pm)

April 14 – 18 – No School, Spring Break & Good Friday!

April 25<sup>th</sup> – Early Dismissal (1:40pm)

May 16<sup>th</sup> – Early Dismissal (1:40pm)

May 26<sup>th</sup> – No School

June 13<sup>th</sup> – Tentative last day of school

### PAYMENT

We accept checks, Visa, MasterCard and Discover. A credit card fee of 2.95% will be added.

All checks should be made out to: "Easton Park & Rec".

### NON-RESIDENT

Non-residents can register for most Easton Park & Rec programs/camps (except where noted) at an additional 10% fee, when space is available.

Easton employees residing out of town can register at the resident rate.

### AGE REQUIREMENT

Children must meet the age requirement before the session of the program/camp for which they are registered, proof of age may be required.

### CANCELLATION POLICY

Any program may be cancelled for insufficient enrollment. All fees would then be credited or refunded.

In case of inclement weather, you will receive an email ASAP from Eastonrec.com. **The excludes Ext. Day.**

**\*Please be aware that some program missed days will be made up at the end of the session.**

### LATE PICK-UP FEE POLICY

We ask that parents make every effort to pick up their child/children on time. Any child who is picked up after the program/Ext Day concludes is considered a "late pick-up" and will be charged a fee, \$10 for every 15 minutes starting at the time the program/Ext Day ends. This charge will be automatically charged to your account, with an email notifying you of the charge. We understand that occasionally things happen, we ask that you contact Ext Day at 203-261-8705 if you will be late.

### LATE REGISTRATION POLICY

Our program registration closes the same day the program starts, unless otherwise noted. If the registration deadline has passed for a program/Day Camp and there is still availability, you will be assessed a \$10.00 administrative fee on top of the program fee. Effective Date: 8/01/19. The Easton Arts Center fee is 10%. Effective Date: 6/26/19.



### REFUND POLICY / RETURN CHECKS

If any program is cancelled by Park & Rec, you will receive an email ASAP from Eastonrec.com. All fees would then be credited or refunded. If a withdrawal occurs **before** the start of a program (**not within 48 hours of program start time**), you will receive a full credit or refund. **If a withdrawal occurs within 48 hours of the program start time, you will be prorated for the first day, and a credit on account will be issued for the remainder of the program.**

After the program starts, no refunds will be issued. A prorated credit may be issued depending on the reason for withdrawal. Requests for refund or credit due to medical reasons will be handled on an individual basis. **\*Please be aware that most program missed days will be made up at the end of the session.** No refunds for missed days.

Returned checks will be charged a fee.

### PICTURES

During the course of our programs/camps we may be, at times taking photos of the activities and its participants. By attending or participating in a program/camp, you are giving your permission to take and publish photos of your children. If you do not wish for your child to be photographed, you must submit this request in writing to our office.

## EASTON PARK INFORMATION

### **Aspetuck Park: 369 Black Rock Road, Easton**

Aspetuck Park offers a hiking trail, picnic area, playground, beach area (no lifeguard), Little League Field and a T-Ball field. A picturesque area right across from the Blue Bird Café, to fish or spend a beautiful afternoon.

### **Easton Country Day Complex (ECD): 660 Morehouse Road, Easton**

Located behind the OLD Samuel Staples School, this location has a walking track, playscape, a Little League Field (front) and a 50/70 Baseball Field.

### **Dog Park: 366 Sport Hill Road, Easton**

Come hangout with your furry friend, and watch them run and play with other puppies. All dogs must be licensed and leashed until they enter the park and gate is closed. We supply the dog bags, so we ask that you clean up after your furry friend!

### **Helen Keller Park: 366 Sport Hill Road, Easton**

Come visit our New Friends Playground located here! You can also find a Basketball Court (after-school hours only), Pond Field, Softball/T-Ball Field, and our Tennis Courts. This is all located in front of Helen Keller Middle School.

### **Morehouse Park: 515 Morehouse Road, Easton**

This location is next to the Samuel Staples Elementary School, and houses many athletic fields. Field of Dreams (FOD Baseball Field), the Morehouse Pavilion, Morehouse Soccer, and Staples Soccer fields.

### **Veteran's Park: 366 Sport Hill Road, Easton**

Lower Veteran's Park houses our Football Field, Babe Ruth Baseball Field along with Soccer Fields. Upper Veteran's Park also houses another Soccer Field.

## EASTON FACILITY AND FIELD RENTALS

**Aspetuck Park:** Rental fee is \$50.00 (resident) per day/\$100.00 (non-resident) per day. A Facility Use Application needs to be filled out and emailed to the Park and Rec office for approval.

**Morehouse Pavilion:** Rental fee is \$50.00 (resident) per day/\$100.00 (non-resident) per day. A Facility Use Application needs to be filled out and returned to the Park and Rec office for a signature approval.

**Commercial Rental:** Refer to the Commercial Facility Use Application found on our website.

# EXTENDED DAY AT SSES

## BEFORE & AFTER SCHOOL PROGRAM

Our Extended Day program is a recreationally based program offering participants the opportunity to spend their before & after school time in a safe, structured environment. Snack time, homework help will be offered as well as numerous other recreational activities such as arts and crafts, sports, and much more! We run following the SSES schedule, mornings from 7:00am until the start of school and afternoons from the end of school until 6:00pm.

**EXTENDED DAY IS HELD IN ROOM #139 IN THE KINDERGARTEN HALLWAY.**

### Important Info!

Please be sure you have **read the Extended Day Manual**. Parents are accepting responsibility for ALL information provided in the manual. The manual is found on our website at [www.eastonrec.com](http://www.eastonrec.com)

**Returning families:** COMPLETELY fill out and return a HARD COPY of the Registration Packet.

**New families:** Please be sure to fill out the Registration Packet, set up your account online, pay the \$50 Family Registration Fee. *All hard copy forms must be handed in before your child can attend the program.*

- **\*NEW\*** Drop-ins must be emailed to the Director for approval 48 hours in advance. You will receive a response within 24 hours.
- **\*NEW\*** Monthly registrations & fees must be paid by the first of every month.
- Sibling discounts only adhere if the same schedule applies and will be taken automatically.
- Drop-off is between 7:00AM & 8:30AM and pick-up is between 4:00PM & 6:00PM and is behind the school at the kindergarten hallway entrance. **\*We ask that parents not enter the building.**
  - **Pick-up and drop-offs after 8:30AM or before 4:00PM MUST go through the front entrance to the school because of the school bus line.**
  - In the AM, please ring the doorbell to announce your arrival. A staff member will meet you at the door at the end of the kindergarten hallway and escort your child to Ext Day. Breakfast will only be served between 7:45am-8:15am.
  - In the PM, please call Ext Day at (203)261-8705 to announce your arrival. A staff member will meet you at the end of the kindergarten hallway door. **YOU MUST MEET THEM AT THE DOOR.** If you are having someone other than yourself pick-up your child, please contact Ext. Day and give the person's name. They will be asked for ID upon arrival.
- **Extended Day closes at 5:00PM on the following days: 4/11 & last day of school (6/13 - TBD).**
- **There will be no credits or refunds given for missed days.**
- The online Extended Day registration calendar is available month by month.

Registration for the program is ongoing and based on availability during the school year. Registration information, program manual and all forms can be found at the Park and Recreation Office or on our website [www.eastonrec.com](http://www.eastonrec.com)



# CUPCAKE & CAKE DECORATING WORKSHOPS

## **CAKE & CUPCAKE DECORATING WORKSHOPS**

The Great British Baker is here to offer you and your friends Cake & Cupcake Decorating Workshops. She will teach students how to decorate like a PRO! Each participant will leave with a fully decorated cake/cupcakes in a box and a decorating certificate. All supplies including apron are included. Cake Workshops are Grades 2-7; Cupcake Workshops are Grades 1-7.

**Date:** Sunday, March 9 - Spring Cupcakes

**Date:** April TBD

**Date:** May TBD

**Time:** 2:00pm-4:00pm

**Grades:** 1-7

**Fee:** \$50/per class

**Location:** Easton P&R Office, 652 Morehouse Road

**Max:** 15 decorators



# AFTER SCHOOL PROGRAMS

## **Play-Well TEKnologies Using LEGO®**

Spring is here! Spring into STEM with Play-Well and tens of thousands of LEGO® parts. Play baseball in spring training, visit the Cherry Blossom festival, and explore raging waterfalls. Apply real-world mechanical engineering concepts as you design, build, and explore your craziest ideas.

**Spring Session:** Tuesdays, 4/1 – 5/13, (no class on 4/15) 6-weeks

**Any make-ups will be added to the end of the session.**

**Time:** 3:50pm-4:50pm

**Grades:** K-2

**Fee:** \$151/per session

**Location:** SSES Small Gym



Register at [www.eastonrec.com](http://www.eastonrec.com)

# AFTER SCHOOL PROGRAMS

## **Robot Inventors – New robots every session!**

Robot Inventors is an advanced version of our signature after-school class, for 3rd – 5th graders. These classes are great for new builders, as well as those seeking a more open-ended robot-building experience. A new project will be introduced each week, as part of the overall theme. This is considered an inquiry-based class, with ample space for experimentation. Students may choose to stick with the week's scripted project, or they can take their own path, taking a hand at turning their ideas into a reality.

At the start of each class, children will be introduced to components and engineering concepts, and they'll review all the parts in their individual RoboKits. Our amazing teachers will then guide the students through building their own super cool robots. Builders will build with their own hands, create with their own imaginations, and KEEP their own robots, forever! **This program is run by Brooklyn Robot Foundry. For more info, please go to: [www.brooklynrobotfoundry.com](http://www.brooklynrobotfoundry.com)**

Approximate breakdown of the classes: 10min - Introduction, lesson, 30min – building, 15min - creating and showcasing, 5min - clean up.

**Spring:** Tuesdays, 4/1 – 5/13, (no class on 4/15), 6-weeks

**This is a 6-week session. Any make-ups will be added to the end of the session.**

**Time:** 3:50pm-4:50pm

**Grades:** 3-5

**Fee:** \$234.00/per session

**Location:** SSES Computer Room



## **Acting & Musical Theater Workshop**

Join the fun and ACT OUT! Learn about acting, singing and dancing, while building confidence and having fun! In addition to a variety of acting exercises and games, students will learn a scene and song from a popular musical to share with family and friends at the end of the session. Taught by Stacey Curti, Director/Choreographer and President of Octagon Performance Group.

**Spring:** Wednesdays, 4/23 – 5/28, 6-weeks

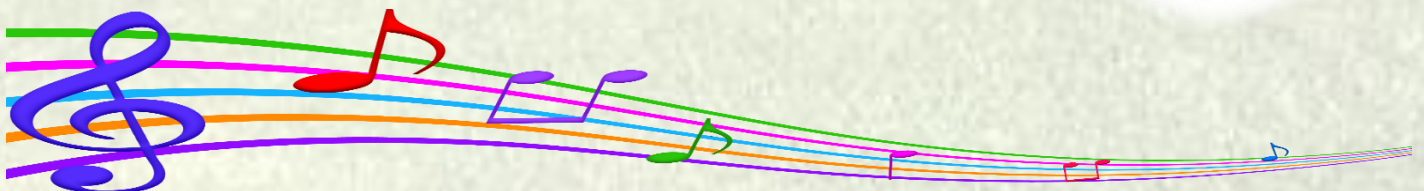
**This is a 6-week session. Any make-ups will be added to the end of the session.**

**Time:** 3:50pm-4:50pm

**Grades:** 3-5

**Fee:** \$135.00/per session

**Location:** SSES Large Gym on 4/23 & 4/30 – Rest of session in Café/Stage





# AFTER SCHOOL PROGRAMS

## **iCook After-School - Cooking Class For Kids**

**Rainbow of Flavors** 🌈 Our chefs-in-training will create a variety of recipes that cover the full spectrum of the rainbow! From Orange Tarts, to Blueberry Cheesecake, to Purple Coleslaw, to Rainbow Veggie Kebabs, this session uses a wide array of colorful ingredients both familiar and new. Foundational cooking skills will be taught, including proper techniques for baking, roasting, measuring, mixing, slicing, dicing, and, of course, kitchen safety! We hope to see you in the kitchen soon. Run by iCook After-School, for more info you can go to their website at [www.icookafterschool.com](http://www.icookafterschool.com). **Please list any allergies when you register.**

**Spring:** Mondays, 3/31 – 5/12, (no class on 4/14), 6-weeks

**Any make-ups will be added to the end of the session.**

**Grades:** 2-5

**Time:** 3:50pm - 4:50pm

**Location:** SSES Classroom# 160

**Cost:** \$165/per session

**Please list any allergies when you register.**



## **Chess by CT Kids Play Chess, Inc.**

Chess is the fun game of thinking. It has been proven to develop memory, concentration, focus, logical thinking and the ability to calculate. The first class will be a review of the basics. Subsequent classes will offer some simple rules the student can use to select a move throughout the game. Sessions will involve a combination of learning and supervised playing. The last class will consist of a tournament with prizes. All participants must know how the pieces move and the basic rules of chess.

**Spring Session:** Mondays, 3/31 – 5/12, (no class on 4/14), 6-weeks

**Any make-ups will be added to the end of the session.**

**Time:** 3:50pm-4:50pm

**Grades:** 3-5

**Location:** SSES Library

**Fee:** \$108/per session

Min of 8 students



**Register at** [www.eastonrec.com](http://www.eastonrec.com)



# AFTER SCHOOL PROGRAMS

## **Tang Soo Do - KAMAS Karate**

Master James King of King Academy of Martial Arts & Self-defense (KAMAS Karate) will train students in the discipline of Tang Soo Do. As such, students in this program are guided and challenged in the basic principles of the art to introduce the underlining principles of conduct of Tang Soo Do (honesty, courtesy, integrity, self-control, perseverance, and indomitable spirit). Emphasis is placed on enhancing each student's physical, mental, and social development to influence the positive life skills and characteristics of discipline and self-confidence. The techniques taught inclusive of all kicks, strikes, blocks, stances, forms, sparring, and self-defense are aligned to the traditional teachings of Tang Soo Do as sanctioned by the ATA. Students will have the opportunity to achieve belts and will test for belt advancement throughout the program. For more information go to [www.kamaskarate.com](http://www.kamaskarate.com) **Optional Uniform - Please order from Amazon.**

The program is credentialed and sanctioned by the American Tang Soo Association and the teachings of the legendary Grand Master Richard Byrne and reputable ATA Masters.

**Spring Session:** Thursdays, 3/27 – 5/22, 6-weeks (no class on 4/10, 4/17 & 5/8)

**Any make-up classes will be added to the end of the session.**

**Time:** 3:50pm-4:50pm

**Grades:** K-5

**Location:** SSES Small Gym

**Fee:** \$145.00/per session

Minimum of 10 students to run program.



## **Trifitness Running Club**

The after-school Trifitness Running Club gives younger athletes an entry into the popular, fun and healthy sport of running. This class is led by Pascale Butcher, All-American Triathlete and owner of Trifitness of Fairfield. Children will learn proper stretching, running, pacing and cool down techniques as they run and have FUN!

**Spring Session:** Fridays, 5/2 – 6/6, 5-weeks (no class on 5/16)

**Any make-up classes will be added to the end of the session.**

**Time:** 3:50 pm - 4:50 pm

**Grades:** 1-5

**Fee:** \$108.00

**Location:** Outdoors at SSES - PICK-UP AT 4:50PM WILL BE AT THE LARGE GYM DOORS, TO THE LEFT OF THE SCHOOL. Class may be cancelled/moved due to inclement weather, and added to the end of the session. Classes may be held in the SSES gym if it rains. You will receive an email the day of any weather/location changes. Please check your SPAM.



# AFTER SCHOOL PROGRAMS



## **Flag Football & Flag Rugby**

Multi-Sport programs are designed to introduce young athletes to a variety of different sports in one setting. Athletes will learn the rules and essential skills of each sport, along with vital life lessons such as sportsmanship, inclusion and teamwork. Enjoy the benefits of exploring multiple sports while building lifelong skills with Skyhawks!

**Spring Session:** Wednesdays, 4/23 – 5/28, 6-weeks

**Any make-ups will be added to the end of the session.**

**Time:** 3:50 pm - 4:50 pm

**Grades:** 2-5

**Fee:** \$135.00/per session

**Location:** SSES Upper Field

Min 8/Max 20



## **MAD SCIENCE**

**The Science Around Us** - Look around you, what do you see? This program will dive deep into science and show us the phenomena that makes the world go round! Our project-based experience will help students see how science is everywhere, from the plants we see blooming in Spring to rockets blasting off out of this world! Our expedition will include the movies on the big screen as well as the toys we play with, the forces that work within our bodies as the those that create powerful storms. We will collect rocks, minerals and maybe some gross things along the way- all in the name of science! Students will receive Mad Science Lab Coats, goggles, and branded take homes that will encourage children to have fun with the science around us daily!

**Spring Session:** Mondays, March 31 – May 12, 6-weeks, (No class on 4/14)

**Any make-ups will be added to the end of the session.**

**Time:** 3:50 pm - 4:50 pm

**Grades:** 1-5 **Fee:** \$183.00/per session

**Location:** SSES Computer Room

Register at [www.eastonrec.com](http://www.eastonrec.com)





# FAIRFIELD COUNTY TENNIS

## Spring Outdoor Fridays

Youth outdoor tennis lessons fall. Classes will focus on teaching basic strokes along with playing lots of games. This is for beginners/advanced beginners. Classes will be taught by certified instructors with a ratio of five students to one instructor. Students must bring their own racquet's & water bottles.

**Dates for all:** Friday, May 2 – June 6, 5-week session (No class on 5/16)

**Make-up classes will be added to the end of the session.**

**Junior Classes – Beginner/Advanced Beginner Fee:** \$150/per class

**Pee Wee's Fee:** \$95/per session

### GRADES & TIMES:

Pee Wee's: Ages 3-5 – 3:15pm-4:00pm – Fee: \$95/per session

\*Grades K-2 & 3-5 - 4:00pm-5:00pm

\*Grades K-2 & 3-5 - 5:00pm-6:00pm

\*Grades 5-7 - 6:00pm-7:00pm

Min 3, Max 5 per instructor, max 10 per class

**\*Children attending a later session cannot wait unattended, they must be with a parent/guardian.**

**There is no bus transportation from SSES to the Tennis Courts.**

## SPRING CO-ED TENNIS & PICKLEBALL CLASSES

**Dates:** Thursdays, May 8 – June 5

**TENNIS - Beginner/Adv. Beginner:** 9:00am-10:30am (min 3, max 5)

**PICKLEBALL – Beginner/Adv. Beginner:** 10:30am-12:00pm (min 3, max 8)

**Fee:** \$235

**Ages:** 18+

**Location:** Helen Keller/Sport Hill Courts



Players will learn how to serve, dink, transition, general rules, and score. More advanced players will focus a little bit more on placement and strategy. The lesson will focus on teaching basic strokes and the game's rules. Eventually, players can play match play in this friendly setup. This is a great way to keep active and exercise while having fun. Players should wear tennis or court shoes. Bring your own paddle and water bottle. Taught by Fairfield County Tennis.

**Beg/ Adv Beg:** 'Pickle curious' still learning strokes, rules, and scorekeeping

**Low Int/ Int:** They can already keep score and have 1- 2 years of experience.

For more info call 203-640-1724, email [fct@fairfieldcountytennis.com](mailto:fct@fairfieldcountytennis.com), or visit [www.fairfieldcountytennis.net](http://www.fairfieldcountytennis.net).

Easton Park & Rec cancellations will be emailed (check your spam), on Facebook and on our webpage.

Fairfield County Tennis Cancellation Line before/after normal business hours: 203-283-5629.

Register at [www.eastonrec.com](http://www.eastonrec.com)



## **The Easton Arts Center – Open Studio, Fine Arts & Mini Picasso**

**\*Please see transportation on next page.**

### **Spring Afterschool Open Studio**

#### **Monday, Tuesday & Wednesday Options**

Have your child join us after school at TEAC (The Easton Arts Center) for OPEN STUDIO. They will have the freedom to use their creative license with some guided instruction. We will touch upon fine art, mixed media, etc. Please dress for a mess! All sessions are 6 weeks. Max: 18

**Time:** 4:00pm - 5:20pm

**Ages:** 4-11

**Fee:** \$185/per session

**Location:** TEAC - 652 Morehouse Road



#### **Mondays**

**Dates:** 4/21 – 6/2, (no class on 5/26)

#### **Tuesdays**

**Dates:** 4/22 – 5/27

#### **Wednesdays**

**Dates:** 4/23 – 5/28

### **Fine Arts**

#### **Instructor: Keri English-Giddes**

Students will learn fundamental methods of drawing and painting from life using live models and still life. Students will work in a variety of mediums: charcoal, watercolors, colored pencils and pastels. Get ready to see your child's work come to life as they build upon their foundation, learn from trial and error, and watch them break out of their comfort zones as they try new techniques. All sessions are 6 weeks.

Max: 15 students

#### **Wednesdays**

**Dates:** 4/23 – 5/28

**Time:** 4:00pm - 5:15pm

**Ages:** 7-12

**Fee:** \$245/per session







## **April PT Conference Days**

Enjoy your afternoon at TEAC during April PT Conference Week at SSES. Give yourself a little extra time and send your child/ren to TEAC to create in Open Studio. Pack a nut free snack and dress them for a mess. If your child is taking bus 11, please remember to change dismissal manager.

**Dates:** April 9, 10 & 11

**Time:** 1:00pm – 3:00pm

**Ages:** 4+

**Fee:** \$42/per day

**Location:** TEAC - 652 Morehouse Road

### **\*TRANSPORTATION**

~ TEAC uses bus #11 to bring children to the Easton Arts Center from SSES on Mon, Tues & Wed, space is limited.

~ Children must be listed as bus #11 in dismissal manager.

~ TEAC uses bus #11 to bring children to The Easton Arts Center from SSES on Mon, Tues & Wed, and 1/2 days. There are limited seats on Wednesdays. Please register early to guarantee a seat. Parents/caregivers always have the option to drive their child.

## **Mini Picasso – Pre-K**

**Instructor:** Keri English-Giddes

Your Mini Picasso will learn the basics of art through interactivity and tactility while having fun painting, splattering, sculpting, mixing, building and creating. This is a drop off class. Dress for a mess! Held in TEAC, enter through the Park & Rec office. This is a drop-off class. Max of 12.



**Wednesdays**

**Dates:** 4/23 – 5/28, 6-weeks

**Time:** 2:30pm-3:15pm

**Ages:** 3+

**Fee:** \$150/per session

### **LATE PICK UPS**

The Easton Arts Center Programs conclude at a specific time. We ask that parents make every effort to pick up their child/children on time. We do understand that sometimes circumstances arise and for this reason we will be instituting a 5-minute grace period. Any child/children that are picked up after that 5-minute grace period, are considered a “late pick up” and will be charged a fee of \$5, then \$1 a minute each additional minute until pickup.

**Register for all programs at [www.eastonrec.com](http://www.eastonrec.com)**

# SPECIAL EVENTS

## Egg Hunt EGG-Strazaganza

Saturday, April 5<sup>th</sup>, (Rain date is April 6<sup>th</sup>)

11:00am – 12:00pm

Ages: 0-10

New Friends Playground – 360 Sport Hill Road

Enjoy searching for Easter eggs at our New Friends Playground and a visit with the Easter Bunny! Find one of 3 SPECIAL EGGS and win a prize! Answer the Easter Trivia correctly for a chance to win a prize!

- ~ Online registration is required
- ~ Don't forget your basket!
- ~ All children must be accompanied by an adult
- ~ Easton residents only
- ~ Check our website & Facebook for any rain date info



## Kids Annual Fishing Derby

Sunday, May 4<sup>th</sup>, 8:00am-10:30am

EARLIER TIME! RAIN OR SHINE

Aspetuck Park, 369 Black Rock Road

**May the 4<sup>th</sup> be with you to catch a ton of fish!**

Easton families are welcome to attend our Annual Fishing Derby at Aspetuck Park. Bring your family, chairs, snacks and your fishing poles. We will provide the live worms.

Prizes will be awarded in 3 categories, Largest, Smallest & Most fish caught.



- ~ Fishing begins at 8:00am, ends at 10:15am
- ~ Prizes will be awarded at 10:30am
- ~ Ages 15 and under
- ~ Open to Easton residents only
- ~ Rain or Shine Event







Summer brochure  
coming soon....



Sunshine Day Camp Fun!





Register today at [www.eastonrec.com](http://www.eastonrec.com)



Follow us @EastonParksRec on TWITTER for field closures



Like us on Facebook at Eastonparkandrecreation



Easton Park & Recreation  
652 Morehouse Rd  
Easton, CT 06612  
P: (203) 268-7200